

# FOR LEASE

## NEWNAN PROFESSIONAL CENTER (NPC) BUILDING C

2201 Newnan Crossing Blvd, Newnan, GA 30265



### Property Details:

- 40K SF Medical Office Building
- Lead Tenant is OrthoAtlanta
- 20,000 SF Available on the Second Floor
- Generous Tenant Improvement Allowances
- Across the street from Piedmont Newnan Hospital
- Estimated Delivery 4th Quarter 2019
- Lease Rate: \$22/SF NNN

Some of the NPC tenants include: Building A - Piedmont Internal Medicine, Wound Care and Hyperbaric Center, Pain Care and Building B - Resurgens Orthopaedics, DaVita Dialysis



1100 Commerce Drive, Suite B  
Peachtree City, GA 30269  
Office: 770-486-8200  
QuantumCRE.com

### **Paul Schwinne, CCIM**

Broker

Cell: 678-296-1588

PSchwinne@QuantumCRE.com

### **David A. Strickland**

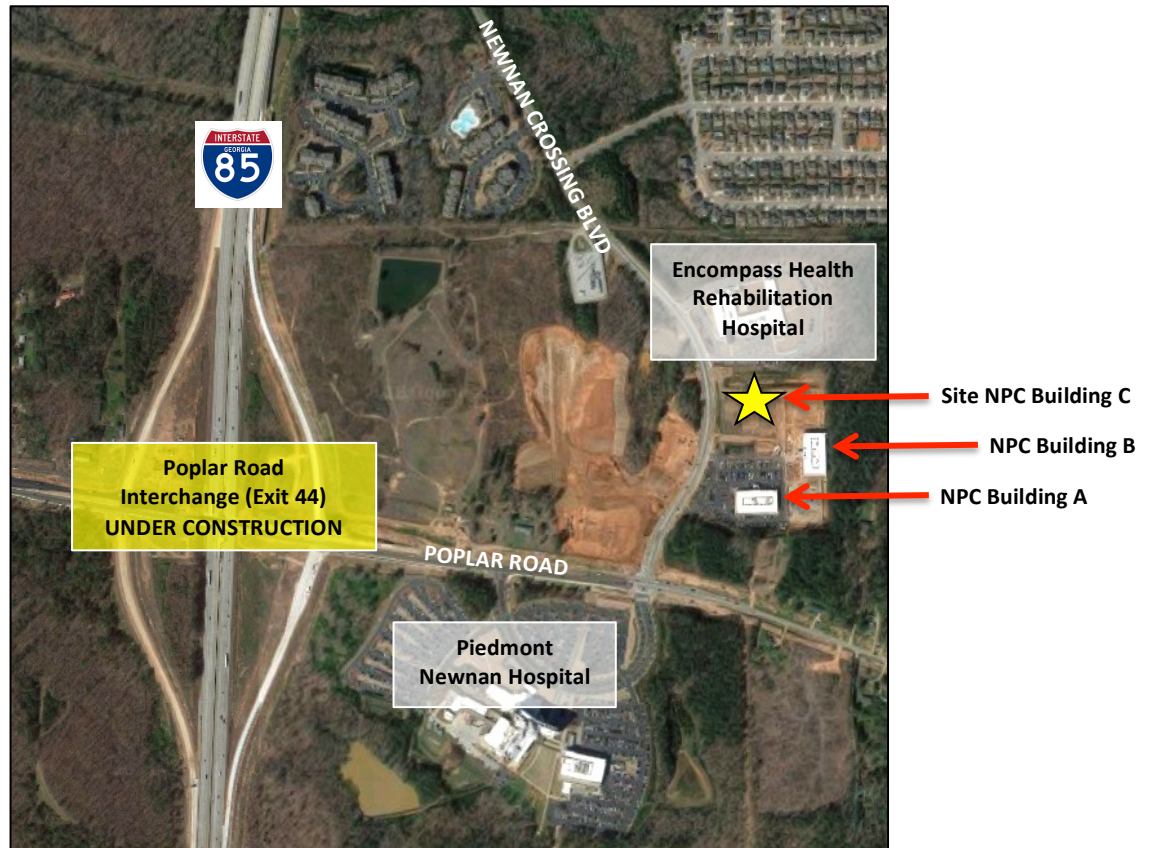
Associate Broker

Cell: 770-377-3078

DStrickland@QuantumCRE.com

This information has been secured from sources we deem reliable, but we make no representations or warranties, expressed or implied as to the accuracy of the information.

## 2201 Newnan Crossing Blvd, Newnan, GA 30265



### Area Information

- Site is across the street from the Piedmont Newnan Hospital (PNH) campus on Poplar Road in Coweta County. PNH is a 136-bed hospital on 105 acres.
- Encompass Health Rehabilitation Hospital of Newnan opened in Late 2014. This 50-bed inpatient rehabilitation hospital is adjacent to the site.
- Cancer Treatment Centers of America (CTCA) has a 50-bed hospital on approximately 100 acres located 2 miles from the site.
- Construction of the I-85/Poplar Road Interchange began in the Spring of 2016. Completion scheduled for 2019.



Office: 770-486-8200

This information has been secured from sources we deem reliable, but we make no representations or warranties, expressed or implied as to the accuracy of the information.